



Directorate of Curriculum, Assessment & Research Sindh Jamshoro

Model Paper 2023-2024

Time: Minutes Grade: IV Subject: Science Total Marks: 100
Name of Student: _____ S/D/O _____ Gender:(Boys/Girls)
Medium: _____ School Name: _____
Taluka: _____ City/Village: _____ Signature of Invigilator: _____

PART (A)

Multiple Choice Questions.

[25 Marks]

- 1: In which direction the earth rotates on its axis?
(a) East to West (b) **West to East** (c) South to North (d) North to South
- 2: Which of the following is not type of an inherited characteristics?
(a) Your name (b) Face shape (c) Hair colour (d) Eye colour
- 3: The taste of a nectar is:
(a) Sour (b) Bitter **(c) Sweet** (d) Salty
- 4: Pollination is divided into how many types:
(a) 1 **(b) 2** (c) 3 (d) 4
- 5: Pollination is a process of transferring of pollen grains to:
(a) Anther (b) leaves (c) Petal **(d) Stigma**
- 6: Mineral found in milk, egg and cheese is:
(a) Iron **(b) Calcium** (c) Magnesium (d) Sodium
- 7: Biotic component deals with the study of:
(a) Living things (b) Non-living things (c) Temperature (d) Nutrition
- 8: The word alpine is used for:
(a) Desert (b) Forest (c) Hills **(d) Mountain**
- 9: Vitamins which strengthen our bones, teeth and also prevents a disease called Rickets is:
(a) A (b) B complex **(c) D** (d) C

10: Which animal has the ability to survive with little water in a desert environment?

- (a) Snake and crocodile **(b) Camel and cactus**
(c) Polar bear and penguins (d) Cactus and penguins

11: The unit of frequency is:

- (a) Newton **(b) Hertz** (c) Joule (d) Watt

12: The sound of chirping of birds is an example:

- (a) Unpleasant (b) Noise **(c) Pleasant** (d) Vibration

13: The group of food called balanced food is:

- (a) Peas, apple, Burger **(b) carrot, mango, milk**
(c) fish, yogurt, cold drink (d) bread, chocolate, sweets

14: The states of matter are:

- (a) 5 (b) 4 **(c) 3** (d) 2

15: Magnet attract materials made up of:

- (a) iron** (b) plastic (c) paper (d) wood

16: An inclined plane wrapped around a cylinder used to fasten objects called:

- (a) screw** (b) pulley (c) wheel (d) lever

17: The amount of space that an object occupies is called:

- (a) Mass **(b) Volume** (c) Weight (d) Material

18: Which of the following is made up of two or more substances that are mixed together but not combined together chemically?

- (a) Mass (b) Solution **(c) Mixture** (d) Solute

19: Sound occurs when particles of air:

- (a) change their shape (b) heat up (c) slow down **(d) vibrate**

20: A substances that dissolve are called:

- (a) Solvent (b) Mixture (c) Solution **(d) Solute**

21. The number of primary teeth in adult is:

- (a) 20 (b) 22 **(c) 32** (d) 30

22. The one of the properties of matter is:

(a) No mass but occupies space

(b) Mass but occupies no space

(c) Mass and occupies space

(d) No mass and occupies no space

23. The 3 parts of an electric circuit are:

(a) cell, connector, bulb

(b) cell, connector, switch

(c) load, connector, energy source

(d) load, wire, connector

24. The path along which the earth travels around the sun is called:

(a) Shell

(b) Axis

(c) orbit

(d) circumference

25. Our physical characteristics are determined by the characteristics of our:

(a) Neighbours

(b) Relatives

(c) Parents

(d) Friends

PART (B)

Constructed Response Questions

Note: Attempt Any 15 Questions, Each Question carry (03) Marks.

[45 Marks]

Q.NO.1 Write down the three functions of stomach?

Q.NO.2 What is our environment and name its component?

Q.NO.3 Suggest three ways to reduce noise pollution?

Q.NO.4 Give three reasons why soil is important?

Q.NO.5 Describe three methods of separation of insoluble solids from mixture?

Q.NO.6 Define the frequency of sound waves and unit of frequency measured in?

Q.NO.7 Enlist disease generated by the deficiency of Iron, Calcium, Iodine **1** for each?

Q.No.8 What is the function of bones in our body?

Q.NO.9 Write three examples of conductor used in our daily life?

Q.NO.10 When we apply force on any object, what are the effects on the object happens, enlist any three.

Q.NO.11 What are the causes of the common disorders of Asthma, Heart attacks and Indigestion.

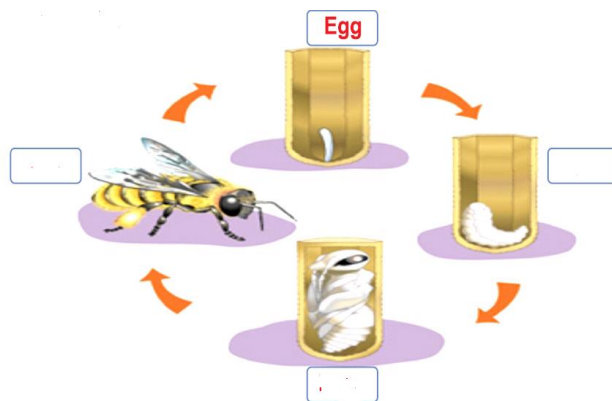
Q.NO.12 Differentiate between Herbivores and Carnivores with 1 example.

Q.NO.13 Write 2 examples of Solid and liquid.

Q.NO.14 Write the three best insulators.

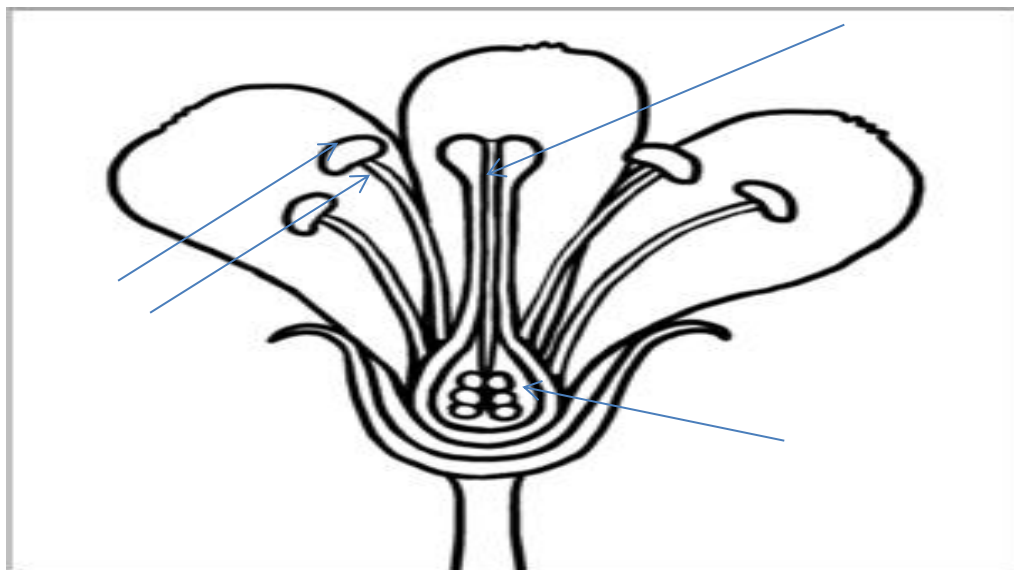
Q.NO.15 Suggest any three ways to keep our body healthy?

Q.NO.16 Complete the missing names of life cycle of Bee.



Q.NO.17 Write any three uses of magnet in our daily life.

Q.NO.18 Label the following diagram any three parts.



PART (C)

Extended/Elaborated Response Questions

Note: Attempt any 6 Questions, Each question carry 5 Marks.

Q.NO.1 Describe Simple Machine in detail and give any three different uses in our daily life with examples?

Q.NO.2 Differentiate between Sound and Noise any five points.

Q.NO.3 Enlist ant 5 materials which will attacks to the magnet?

Q.NO.4 Draw and label the life cycle of Bean plant.

Q.NO.5 Differentiate between the following:

(i) Conductor and Insulator

(ii) Open and Closed circuit

Q.NO.6 Define Produces, Consumers and Decomposers.

Q.NO.7 If a train covered a distance of 95 km in 30 minutes, what is its speed?

Q.NO.8 What is the human heart made of and Why is it important fornthe our body?

Q.NO.9 Complete the information table.

Food Groups	What it does for the body	Examples
Proteins		
Carbohydrates		
Fats and Oil		
Vitamins and Minerals		



Directorate of Curriculum, Assessment & Research Sindh Jamshoro

Model Paper 2023-2024

Time: Minutes Grade: V Subject: Science **Total Marks: 100**

Name of Student: _____ S/D/O _____ Gender: (Boys/Girls)

Medium: _____ School Name: _____

Taluka: _____ City/Village: _____ Signature of Invigilator: _____

PART (A)

Multiple Choice Questions. [25 Marks]

1: Amphibians live on:

- (a) Land (b) Water (c) Soil **(d) Land and water**

2: The large group of organisms are:

- (a) Characteristics (b) Plants (c) Animals **(d) Kingdom**

3: The body of vertebrates is divided in to:

- (a) **Two parts** (b) Three parts (c) Four parts (d) Five parts

4: Fish breath through the:

- (a) Skin **(b) Gills** (c) Mouth (d) Lungs

5: Lizards, Crocodile, Snake and Tortoise are the examples of:

- (a) Pices **(b) Reptiles** (c) Amphibians (d) Aves

6: Reptiles lay eggs on:

- (a) **Land** (b) Deseret (c) Water (d) Soil

7: All Viruses are:

- (a) Useful **(b) Pathogenic** (c) Non-pathogenic (d) Useless

8: Virus and Bacteria are the main group of:

- (a) Macro-organisms **(b) Micro-organisms** (c) Fungi (d) Plants

9: Following is not a greenhouse gas:

- (a) Oxygen (b) Ozone (c) Carbon dioxide **(d) Methane**

10: The seed of cotyledon plant consist on:

- (a) **Two parts** (b) Three parts (c) Four parts (d) Five parts

11: Disease may be caused due to air pollution:

- (a) Diarrhoea (b) Cholera (c) **Lung's cancer** (d) Typhoid

12: Conversion of ice in to water is an example of:

- (a) Condensation (b) Evaporation (c) **Melting** (d) Freezing

13: Following has a definite volume and shape:

- (a) Gas (b) Liquid (c) **Solid** (d) Solid-liquid

14. Following has a definite volume but no definite shape:

- (a) Gas (b) **Liquid** (c) Solid (d) Gas-liquid

15: The force always act as:

- (a) **Opposite direction** (b) Same direction
(c) Right direction (d) Left direction

16: Smallest unit of microorganism is:

- (a) **Cell** (b) Tissue (c) Organ (d) Organism

17: The Following is an example of beneficial microorganism is:

- (a) Virus (b) Fungus (c) Parasite (d) **Pro biotic Bacteria**

18: The state of a matter has a definite volume but the takes the shape of its containers is:

- (a) Plasma (b) **Liquid** (c) Solid (d) Gas

19: The Following is an example of a gas is:

- (a) Water (b) Iron (c) Silver (d) **Oxygen**

20: The Fastest thing in the universe is:

- (a) Sound (b) **Light** (c) Air (d) Water

21: The following objects does not allow light to pass through:

- (a) Glass (b) Plastic (c) **Wood** (d) Paper

22: The type of soil holds the most water is:

- (a) Sandy (b) **Clay** (c) Loamy (d) Rocky

23: The Following is a source of air pollution:

- (a) Recycling (b) Planting trees

(c) Burning fossil fuels

(d) Using renewable Energy

24: The Unit has to measure force is:

(a) Kilograms

(b) Meters

(c) Newton

(d) Litres

25: The Following is an example of force is:

(a) Sleeping

(b) Eating

(c) Running

(d) Breathing

PART B

Constructed Response Questions

Note: Attempt all Questions, Each Question carry (03) Marks.

[45 Marks]

Q. No. 1 Write the characteristics of fishes.

Q. No. 2 Define Amphibians, Reptiles and Mammals. (Give only definitions)

Q. No. 3 Give any one difference between Fungi, Virus and Bacteria.

Q. No. 4 Define Infection.

Q. No. 5 Write any three conditions, which are necessary for germination.

Q. No. 6 Mention the parts of French bean seed. (three parts)

Q. No. 7 What is pollution? Give two examples.

Q. No. 8 Highlighted the three points of pollutions.

Q. No. 9 Define Solid, Liquid and Gas. (Only definition)

Q. No. 10 Write any three advantages of friction.

Q. No. 11 Write any three disadvantages of friction.

Q. No. 12 What is transport, translucent and opaque objects? (Only definition)

Q. No. 13 What is pinhole camera? (Only definition)

Q. No. 14 Define fuse.

Q. No. 15 Define Mercury Planet.

PART C

Extended/Elaborated Response Questions

Note: Attempt all Questions, each question carries 5 Marks.

[30 Marks]

Q. No. 1 Describe the characteristics of Soil.

Q. No. 2 Explain the Solar system.

Q. No. 3 Explain how lightening occurs?

Q. No. 4 Describe the differences phases of moon.

Q. No. 5 Describe inclined plane and wedge with example.

Q. No. 6 Explain the measures to reduce the pollution.



Directorate of Curriculum, Assessment & Research Sindh Jamshoro

Model Paper 2023-2024

Time: Minutes Grade: VI Subject: Science Total Marks: 100
Name of Student: _____ S/D/O _____ Gender:(Boys/Girls)
Medium: _____ School Name: _____
Taluka: _____ City/Village: _____ Signature of Invigilator: _____

PART (A)

Multiple Choice Questions.

[25 Marks]

1: Robert Hooke observed cell in the:

- (a) Root (b) Leaf **(c) Cork** (d) Flower

2: Light energy trapped by plant with the help of:

- (a) Stomata (b) Leucoplast **(c) Chlorophyll** (d) Chromoplast

3: Lungs help to carry out from the blood:

- (a) **Oxygen** (b) Carbon dioxide (c) Food (d) Hormones

4: Ear helps in hearing as well as functioning as body:

- (a) Touching (b) Shivering (c) feeling **(d) Balancing**

5: The surface of human tongue containing the receptors:

- (a) taste receptors (b) Touch receptors **(c) Sweat receptors** (d) Smell receptors

6: Skin detect the sense of:

- (a) Smell **(b) Touch** (c) Sweat (d) feel

7: During photosynthesis process plant produces food like:

- (a) Minerals **(b) Glucose** (c) Protein (d) Fat

8: The plant performs main reactions during photosynthesis:

- (a) **Two** (b) Three (c) Four (d) Five

9: Gaseous exchange in plants occurs through:

- (a) Node (b) Stem (c) Root **(d) Stomata**

10: The Complex molecule breaks into smaller molecules by:

- (a) Parasites **(b) Decomposers** (c) Producers (d) Consumers

11: The end product of respiration is known as:

- (a) Oxygen **(b) Carbon dioxide** (c) Nitrogen (d) Hydrogen

12: The place where glucose formed in the plants is known as:

- (a) Stem (b) Shoots **(c) Leaf** (d) Roots

13: The gas is used to fill party balloons is:

- (a) Helium** (b) Oxygen (c) Nitrogen (d) Carbon mono oxide

14. A process used to separate colored chemicals or substances is called:

- (a) Filtration (b) Distillation **(c) Chromatography** (d) Crystallization

15: The symbol of Potassium element represented by:

- (a) P **(b) K** (c) Po (d) Ko

16. For the process of burning or combustion required:

- (a) Carbon dioxide gas **(b) Oxygen gas** (c) Nitrogen gas (d) Argon gas

17. The percentage of Nitrogen gas in the air is:

- (a) 77% **(b) 78%** (c) 79% (d) 80%

18. The process is takes place in the living things to produce energy from food :

- (a) Photosynthesis (b) Combustion **(c) Respiration** (d) Decomposition

19. The energy due to flow of negatively charge electron is called:

- (a) Potential (b) Thermal **(c) Electrical** (d) Sound

20. After digestion of food it gives us:

- (a) Electrical energy **(b) Chemical energy** (c) Potential energy (d) Kinetic energy

21. When the second wheel in a pair of gears has more teeth than the first one, it turns slower than the first one but with:

- (a) Same force **(b) More force** (c) Less force (d) Variable force

22. When a pulley is free to move up and down along with the load it is called:

- (a) Same force (b) More force (c) Less force **(d) Variable force**

23. Which one is used in submarine to monitor the surface of water from the depth of water:

(a) Kaleidoscope

(b) Periscope

(c) Microscope

(d) Telescope

24. Which metal show greatest speed of sound through it:

(a) Copper

(b) Gold

(c) Lead

(d) Aluminium

25. The satellites are used to provide latest information about atmosphere such as clouds and temperature of various regions of earth are called as:

(a) Weather satellites

(b) Navigation satellites

(c) Communication satellites

(d) Scientific satellites

PART (B)

Constructed Response Questions

Note: Attempt 15 Questions, Each Question carry (03) Marks.

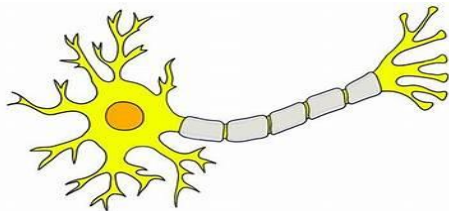
[45 Marks]

Q.NO.1 Define function of revolving nose piece of Microscope.

Q.NO.2 Write down three main differences between plant cell and animal cell.

Q.NO.3 Define structure and function of Mitochondria.

Q.NO.4 Label the figure of Neuron and define its main functions.



Q.NO.5 Why the role of leaf is important in photosynthesis?

Q.NO.6 What is the function of retina in the eye and where it is placed?

Q.NO.7 Define decomposers.

Q.No.8 Why stomata is important and write down three main functions of it.

Q.NO.9 Write a brief note on Mutualism.

Q.NO.10 Write down three main differences between atom and molecule.

Q.NO.11 Why we considered that air is a mixture of gases?

Q.NO.12 Define sublimation.

Q.NO.13 Write down three differences of mixture and compound.

Q.NO.14 Why solution is different from suspension?

Q.NO.15 Define pulley and its three main functions.

Q.NO.16 Gears increases the speed. How it works.

Q.No.17 What is the role of surface in reflecting of light?

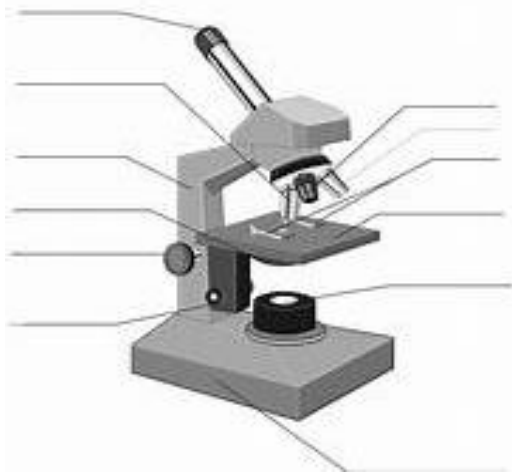
Q.No.18 What is satellite and its function?

PART (C)
Extended/Elaborated Response Questions

Note: Attempt any 6 Questions, each question carries 5 Marks. [30 Marks]

Q.NO.1 How plant cell is different from animal cell? Enlist five points.

Q.NO.2 Label at least five parts of the Microscope.



Q.NO.3 Enlist the five uses of mixtures in our daily life.

Q.NO.4 Describe function of root and shoot system in plant?

Q.NO.5 How temperature effect on solubility by using different components?

Q.NO.6 You are using bicycle in daily life. Think and write how it function?

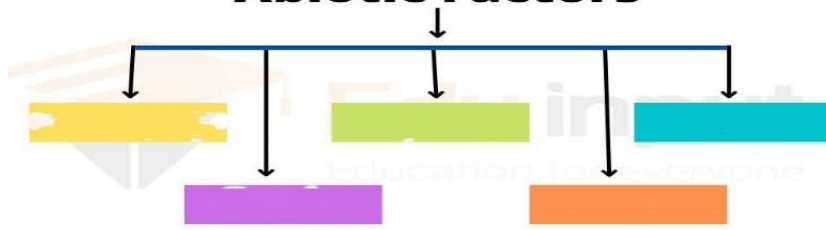
Q.NO.7 Draw the figure of leaf and label its different parts.

Q.NO.8 Satellite tells us the position, where we are. Explain How?

OR

Q.NO.9 The write the names of abiotic factors which are necessary for living organisms:

Abiotic Factors





Model Paper 2023-2024

Time: Minutes Grade: VII Subject: Science Total Marks: 100
Name of Student: _____ S/D/O _____ Gender: (Boys/Girls)
Medium: _____ School Name: _____
Taluka: _____ City/Village: _____ Signature of Invigilator: _____

PART (A)

(25 Marks)

Multiple Choice Questions

1. Xylem is found in the:

- (A) Roots only (B) Roots and stem **(C) Roots, stem and leaves** (D) Flowers

2. The pushing and pulling of objects is called:

- (A) Force** (B) Acceleration (C) Speed (D) Energy

3. Oxygen exchange takes place in:

- (A) Bronchi (B) Trachea **(C) Alveoli** (D) terminal bronchioles

4. The atomic mass of an element depend on:

- (A) Protons (B) electrons and proton
(C) Neutron and electron **(D) proton and neutron**

5. Ponds, rivers and seas are examples of the following habitat:

- (A) Aquatic** (B) desert (C) forest (D) grassland

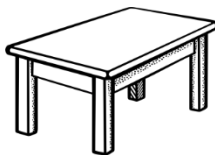
6. The Valency of carbon is:

- (A) 4 (B) 5 (C) 0 **(D) 4**

7. Which of the following is good conductor of electricity?



(A)



(B)



(C)



(D)

8. The SI unit of Energy is:

- (A) Ampere (B) Calorie **(C) Joule** (D) Gram

9. By dissolving sugar in hot water, Anum's mother created a concentrated sugar syrup. Sugar crystals separated during cooling. This denotes a:

- (A) Physical change that is reversible** (B) Chemical change that is reversible
(C) Irreversible physical change (D) Irreversible chemical change

10. Which one is the example of chemical change?

- (A) Burning of candle** (B) Dissolving of sugar (C) Melting of ice (D) Boiling of water

11. What is the correct symbol of carbon?

- (A) Cl **(B) c** (C) Ca (D) Ag

12. Transfer of heat energy from one place to another with the movement of matter itself is called:

- (A) Radiation **(B) Convection** (C) Conduction (D) power

13. Electrons carries charge:

- (A) Positive **(B) Negative** (C) Neutral (D) Positive and negative

14. The name of our galaxy is:

- (A) Elliptical **(B) Milky way** (C) irregular (D) Spiral

15. How many constellation in the sky?

- (A) 40 (B) 48 (C) 80 **(D) 88**

16. The Atomic mass of nitrogen is:

- (A) 14** (B) 7 (C) 18 (D) 20

17. Asthma is a chronic disease of:

- (A) Digestive System (B) Nervous System
(C) Respiratory System (D) Circulatory System

18. Ali is studying the relationship of an organism and their environment. Ali is a/an

- (A) biologist **(B) ecologist** (C) microbiologist (D) geologist

19. Radiations moves in the form of:

- (A) grains (B) materials (C) fluid **(D) waves**

20. Select the primary source of energy in a food chain.

- (A) animals (B) plants **(C) the sun** (D) Water

21. The process that changes food into simpler forms the body can use is called:

- (A) Circulation **(B) digestion** (C) respiration (D) egestion

22. The different items belows are classified according to whether they are bad or good conductor of heat.

Good conductors	Bad conductors
aluminum paper copper iron	air a piece of cloth wood plastic

Identify the material which is classified **WRONGLY** in the above table.

- (A) Plastic (B) air **(C) paper** (D) iron

23. The percentage of earth's surface is covered with salty water is:

- (A) 79.5% (B) 89.5% (C) 95.7% **(D) 97.5%**

24. The scientific theory that describe the origin of the universe is called:

- (A) Theory of relativity (B) Atomic theory
(C) Big Bang Theory (D) theory of evolution

25. The process by which a solvent passes through a porous is called:

- (A) Distillation (B) Filtration (C) Chlorination **(D) Osmosis**

PART (B)

Constructed Response Questions

(45 Marks)

Note: Attempt Any 15 Questions, Each Question carry 3 Marks

Q.NO.1 Write down any 3 differences between Breathing and Burning process? (03 Marks)

Q.NO.2 Define Root Pressure? (03 marks)

Q.NO.3 Why respiratory system is important for a living things? (03 Marks)

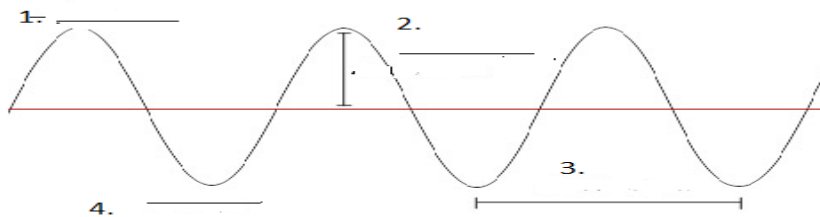
Q.NO.4 Name any 3 agents used for cross pollination? (03 Marks)

Q. NO.5 (a) How 'Refractive index' of any medium calculated? (02 Marks)
(b) What is the refractive index of Air and water? (01 Marks)

Q. NO.6 (a) Why do we see bubbles in water, during the boiling process of it? (02 Marks)
(b) How many component of splitting of light? (01 Marks)

Q.NO.7 What is a Wave and give two examples of longitudinal wave? (03 Marks)

Q.NO.8 Label the figure with the terms Amplitude, crest and trough at their suitable places. (03 Marks)



Q.NO.9 (a) Define wavelength with its unit? (02 Marks)
(b) Write down the unit of amplitude? (01 Marks)

Q.NO.10 Sort out Isotopes used in medicines and in agriculture and write in separate column. (03 Marks)

Carbon-14	Cobalt-60	Phosporus-32
Copper -64	Nitrogen-15	Iodine-123

Q.NO.11 List out any three suggestion through which we prevent from Constipation? (03 Marks)

Q.NO.12 Write down the audible frequency range of human ear, Dog, and Dolphin? (03 Marks)

Q.NO.13 (a) How electric current is produced? (02 Marks)
(b) Define the unit of electric current? (01 Marks)

Q.NO.14 (a) Write any two applications of Parallel circuit? (02 Marks)
(b) Write any one disadvantage of Series circuit? (01 Marks)

Q.NO.15 Describe resistance with unit? (03 Marks)

Q.NO.16 Name any three safety devices. (03 Marks)

Q.NO.17 (a) Name the vessels which carry blood to the heart? (01 Mark)

- (b) Name the blood vessels that brings oxygenated blood to the heart chamber?(01 Mark)
 (c) Which chamber of the human heart carry deoxygenated blood? (01 Mark)

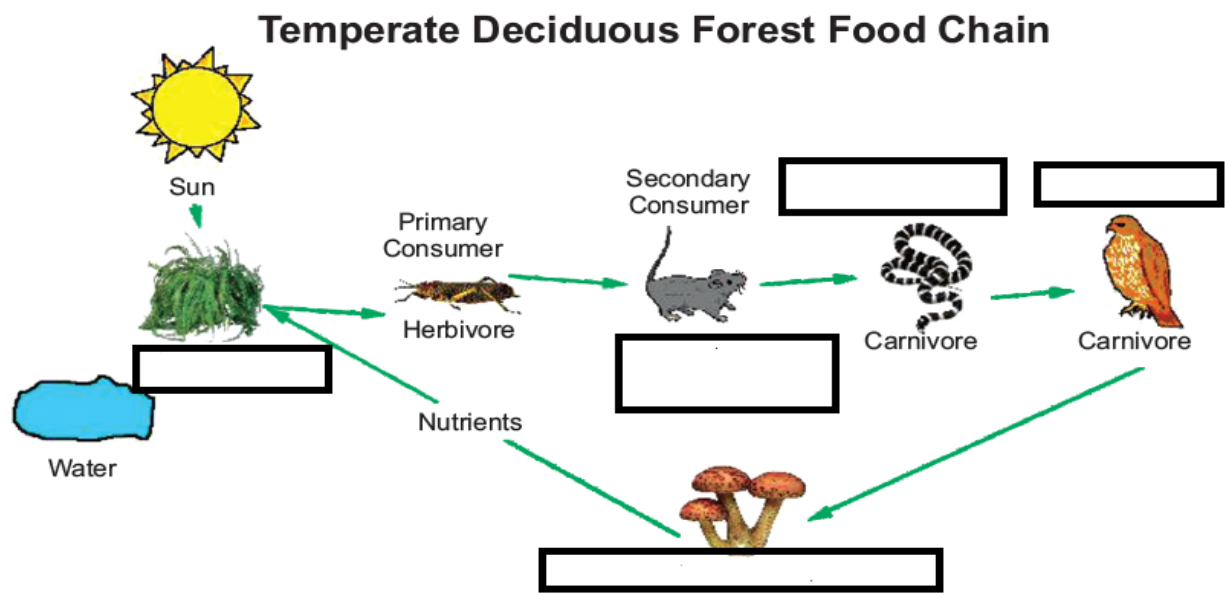
Q.NO.18 List out any three suggestion through which we prevent from Constipation? (03 Marks)

PART (C)

Extended/Elaborated Response Questions (30 Marks)

Note: Attempt any 6 Questions, Each question carry 5 Marks.

- Q.NO. 1 Write any 5 symptoms of people who has diabetes. (05 Marks)
 Q.NO. 2 Write down the names with chemical formula of any 5 compounds. (05 Marks)
 Q.NO.3 Define Frequency, its unit and how it is calculated? (05 Marks)
 Q.NO.4 Define the term Habitat and any one type of habitat on basis of physical characteristics in detail. (05 Marks)
 Q.NO. 5 Complete the diagram of Food chain. (05 Marks)



- Q.NO. 6 Describe the dispersion of light by using a prism and also enlist colours of light using a Prism. (05 Marks)
 Q.NO.7 Define the terms: (05 marks)

(i) Speed of the wave (ii) Pitch (iii) Frequency (iv) Loudness (v) Amplitude

Q.NO.8 Explain the hydrocarbon as a fuel. (05 Marks)

Q.NO.9 Explain reversible change and irreversible change with 1 one example of each. (05 marks)



Model Paper 2023-2024

Time: Minutes Grade: VIII Subject: Science Total Marks: 100
Name of Student: _____ S/D/O _____ Gender: (Boys/Girls)
Medium: _____ School Name: _____
Taluka: _____ City/Village: _____ Signature of Invigilator: _____

PART (A)

Multiple Choice Questions

(25 Marks)

1. The one of the following is an example of conditioned reflex is:

- (A) Sneezing (C) Withdrawal of hand on touching a hot
(B) Yawning (D) **Watering of mouth at the smell of food**

2. Burning of natural gas and running of vehicles are the causes of:

- (A) Noise pollution (B) Water pollution
(C) Land pollution (D) **Air Pollution**

3. Metals are good conductors of:

- (A) Heat (B) Electricity (C) **Heat and electricity** (D) Heat and Light

4. If amplitude of sound increase then what would be its loudness?

- (A) **Increases** (B) Decreases (C) May increases (D) May increases or decreases

5. Acids react with metals and produce:

- (A) Oxygen (B) **Hydrogen** (C) Nitrogen (D) Carbon Dioxide

6. Electric Current produced by the flow of:

- (A) **Electrons** (B) Protons (C) Neutrons (D) positrons

7. We can see the television program due to:

- (A) Natural Satellite **(B) Artificial Satellite** (C) Sound waves (D) Air

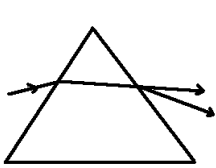
8. When eye ball is too short, this will be caused of:

- (A) short sightedness **(B) long sightedness** (C) color blindness (D) defects of sight

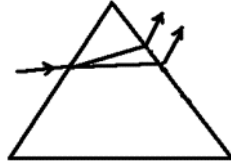
9. Earth rotates around the sun and it gives:

- (A) Winter season (B) Autumn season **(C) Day and Night** (D) Summer Season

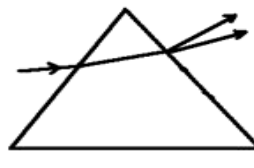
10. Which one of the following diagram best illustrates the dispersion effect of a prism on white light?



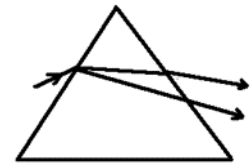
(A)



(B)



(C)



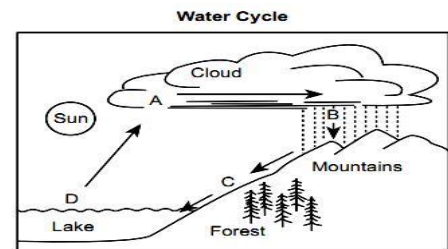
(D)

10. The basic source of energy for plants:

- (A) Moon (B) Soil **(C) Sun** (D) Air

11. The process is occurring at D in the picture is:

- (A) Condensation (B) Filtration
(C) Run off **(D) Evaporation**



12. The part of the human brain which performs the balancing of the body is called:

- (A) cerebrum** (B) cerebellum (C) medulla (D) skeleton

13. A device which is used the energy of sun rays to produce electrical energy is called:

- (A) dry cell **(B) solar cell** (C) mercury cell (D) alkaline cell

14. The first artificial satellite sent by Russia into orbit around the earth:

- (A) space shuttle-I (B) sputnik II (C) sputnik III **(D) sputnik I**

15. Which one of the following is convex lens? **Key B**



16. CFC, a group of gases are major caused of:

- (A) Acid Rain (B) Deforestation **(C) Depletion of Ozone Layer** (D) Noise pollution

17. The sound of large drum is more than a small drum because:

- (A) its produced less number of vibration **(B) its area for vibration is more**
(C) its produced more number of vibration (D) its area of vibration is less

18. Which one of the following is the property of acid?

- (A) sour taste** (B) bitter taste (C) turn red litmus to blue (D) PH equal to 7

19. Calcium hydroxide found in:

- (A) Window cleaner (B) Soap (C) yogurt **(D) lime water**

20. Plants which make, its own food by photosynthesis process is called:

- (A) consumer **(B) producer** (C) decomposer (D) microorganism

21. A farmer wants to neutralize the acidity of the soil. Which compound should use?

- (A) potassium nitrate (B) potassium sulfate **(C) calcium hydroxide** (D) ammonium nitrate

22: The instrument used to measure the atmospheric pressure is called:

- (A) Thermometer **(B) barometer** (C) anemometer (D) lactometer

23. The example of derived quantities is:

- (A) Area** (B) Length (C) Mass (D) Time

24. Increase in length, area and volume of solid, liquid and gases due to change in temperature is:

- (A) Electrical Expansion (B) Chemical Expansion
(C) Molecular Expansion **(D) Thermal Expansion**

25. Each kidney has about a million tiny units

- (A) Neuron **(B) Nephron** (C) Ureter (D) Nerves

Part (B)

Constructed Response Questions

(45 Marks)

Note: Attempt Any 15 Questions, Each Question carry (03) Marks

- Q.NO.1 How do you see the impact of human activities in polluting the environment? Support your argument with one examples. (03 Marks)
- Q.NO.2 Give any two differences between solute and solvent. (03 Marks)
- Q.NO.3 Explain image formation in concave lens by drawing its diagram. (03 Marks)
- Q.NO.4. Difference between Pitch & loudness of sound with one examples. (04 Marks)
- Q. NO.5 Explain difference between concave & convex lens with the help of diagram. (03 Marks)
- Q. NO.6 Define amplitude of sound with the help of diagram. (03Marks)
- Q.NO.7 Write any two differences between saturated and unsaturated solution. (03 Marks)
- Q.NO.8 Describe the reactants and products in a chemical reaction? (03 Marks)
- Q.NO.9 Draw the atomic structure of the given element. (Atomic number: Fluorine 9) (03 Marks)
- Q.NO.10 Define scalar and vector quantities with one examples. (03 Marks)
- Q.NO.11 Write any TWO significances of transpiration. (03 Marks)
- Q.NO.12 Give any two differences between acid and base. (03 Marks)
- Q.NO.13 Define Cell Cycle. (03 Marks)
- Q.NO.14 Enlist the types of lens and one use of each lens? (03 Marks)
- Q.NO.15 Write any three uses of salt. (03 Marks)
- Q.NO.16. Describe cell division. (03 Marks)
- Q.NO.17 What is space station and satellite? (03 Marks)
- Q.NO.18 Write any three examples of reflex action? (03 Marks)

PART (C)

Extended/Elaborated Response Questions

(30 Marks)

Note: Attempt any 6 Questions, Each question carry 5 Marks.

- Q.NO.1. What is greenhouse effect? Explain why the temperature of the earth's atmosphere is being increased day by day.

Q.NO.2. Write your opinion about the 5 major causes of pollution and its impact on the environment.

Q.NO.3. Balance the chemical equations of the following:



Q.NO.4. Define the following terms:

(i) Resistor (ii) Diode (iii) Transistor (iv) AC current (v) DC current

Q.NO.5. List any biotechnological products used in our daily life.

Q.NO.6. Write names of five stronger acids with formula.

Q.NO.7. Distinguish between Mitosis and Meiosis any (5).

Q.NO.8. Explain thermal expansion of heat in solids and liquids with 2 examples?

Q.NO.9. Write down any 5 benefits of space exploration in the field of medicines?